

A
Progress Report on
Agricultural Cooperative Implementing Gravity Ropeway as
Alternative Transportation
Chandibhanjyang Gravity Ropeway,
Chandibhanjyang VDC, Chitwan,
Nepal

Prepared For:
Technology for Access, Access for Livelihood (TAAL)
Poverty Alleviation Fund (PAF)



Prepared By
Group for Rural Infrastructure
Development Nepal
GRID Nepal

Wise-use House Complex, Jwagal, Kopundol
GPO Box No 9957, Kathmandu
Phone Number: (977 1) 5553870, 5546879, 5011013 Fax Number: (977 1) 5011006
Email: gridnepal@wiseuse.org.np, <http://www.gridnepal.org>

PROGRESS REPORT

I. Background Information

<u>Project Title:</u>	Agricultural Cooperative Implementing Gravity Ropeway as Alternative Transportation
<u>Project Manager:</u>	Mr. Guna Raj Dhakal
<u>Report Author's Name</u>	Mr. Guna Raj Dhakal
<u>Address of the Organization:</u> <u>(Permanent address of the organization)</u>	Wise Use House, Jwagal, Kupandole, Lalitpur, Nepal
Telephone No.: 5011013, 5525720, Fax No.: 5011006	E-mail: gridnepal@wiseuse.org.np URL: www.gridnepal.org
Project Site:	Chandibhanjyang, Chitwan

II. Project Status Summary

The project is on the track for the achievement of targeted goals. The main aim is to enhance the livelihood of the people living in the uphill by providing good market access for their agricultural products. We had made numbers of visit to the project area for the formation of cooperative and the committee for the construction of gravity ropeway. All the technical supports are given for the central office Kathmandu and rest of the works are managed by the local office, Chitwan branch.

Albeit, there is some delay in progress, the project is about of complete by 4th August, 2009. There may be chances of increase in project cost, as the users are demanding to extend the ropeway system to further higher than we had proposed. But we have not yet considered the extension of the system. So, till date the final project cost **Rs. 4,610,458.00** which we had proposed. The social formation of the committee is nearly completed. The edifice has been started. For this course, we had made convention with Green Tech for the innovation in the system, fabrication and supply of the mechanical parts and equipments required for the system through bidding process. In this alliance, GRID Nepal and Green Tech works together for the innovation and complete installation of the system. The invitation for the proposal for the innovation, fabrication and supply of the ropeway components is best suitable as we think.

III. Progress

Milestone Objectives (Major output indications mentioned in the agreement including those mentioned in the proposal)	(Completed / In Progress)	Descriptive Information on the Status
Social Portion		

Local meetings with communities to orient them on agricultural cooperative, alternative transport systems and their benefits	Completed	Local meeting with communities has held on August 2008 in school ground, centre point of project area comprised with project team, various groups (forest, mother, ethnic, and farmer) of community, and representatives of government local agencies. All participants were oriented to discussion on how, when to implement project? This meeting also formation sub committees of local people for supporting project implementation.
Conduct baseline surveys of target households	Completed	<p>Baseline survey has conducted of target households apply following methods</p> <p>Field Observation</p> <ul style="list-style-type: none"> • Household Survey • Focus group Discussion • KII <p>Household survey was intended to collect socio economic data of households. A form of questionnaires was developed, under which social cultural, economic, health , environmental aspects as well as , condition of drinking water, infrastructure, information, opportunities of training, job, agriculture as well as non-agriculture product's topics were also included. Household survey was conducted based on random sampling method. Field observation, FGD and KII methods were also included in study process. In this purpose guideline and checklist were also developed. After completed base line survey, collected data has analyzed and drawn conclusion by expertise of project team.</p>
Formation of cooperative owned by farmers	Completed/ In Progress	According to proposal Cooperative is the centre of project. It has formation on the basis of one-person, one-vote. It is inclusive by nature. A adohoc executive committee has organized various sub committees for the operation of agriculture activities and gravity ropeway. Cooperative is going to registration process in District Cooperative Association in Chitwan. Now a group fo Adohoc committee is prepared Cooperative Binimawali for registration process in District Cooperative Sangh to get legal authority from Government of Nepal on the one side and other side a group of executive committee is preparing Action / Work Plan of cooperative.

Field visiting by community's farmers	In Progress	A group of farmer of target communities is going to field visit this week in Runche dada of Hetauda to observe the situation of model farmers and cultivating pattern. Farmers of this village have succeeded to change their life style drastically by applying agriculture activities. We hope that this visit would be fruitful to copy and do new ideal agriculture activities effectively.
Conduction agriculture training for farmers and provide Agro seeds	In Progress	We are going to conduct three days agriculture cultivation training for farmers after field visiting. The participants of this training would be those farmer who went/ included in field visiting program. A team with three member of agriculture expertise will conduct this training.. This training is specially related to cultivation method of cash crops which are going to cultivate by villager near future . After completed agriculture training Some packages of agro seeds will be distribute .
Sub-sectoral market study and Participatory Market Chain Analysis	Completed	A team of project included two members studied subsectoral market and analyzed market chain of agro products. This study team has find out potential market of agro product from village. This team has drawn conclusion and recommended that the potential Sub sectors / agro crops /Non agro sectors are as follow: Tomato and Sag ,Barela,Simi, Pea ,Squas ,Pumpkin Cucumber, Body (Sosta),Ginger/Garlic Potato,Doka, Thumsi,Hen /goat. The potential market for above products are as Narayanghat , Mugling, Abukhaireni (Tanahun), Kurintar etc.
Technical Portion		
Detail Survey and Design of the Gravity Ropeway System	Completed	The upper and lower stations are finalized and the Detail Survey and Design of the Gravity System is completed.
Invitation of Fabricator and Selection	Completed	The fabricator is selected through bibbing which includes design, innovation and fabrications.
Foundation Excavation and Construction	In progress	The site preparation and foundation excavation is in progress.
Collection of Construction materials	In Progress	The required materials have being collected from the quarry.

IV. Attention Areas, Problems and solution

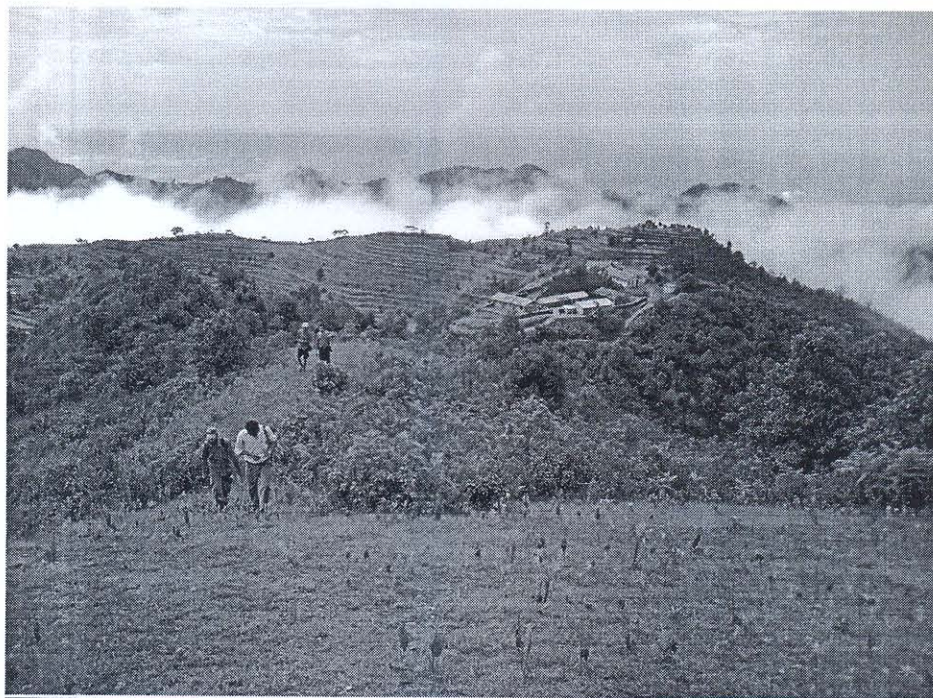
Followings are the major reasons which make the project delay.

Challenges:	Adjustments:
Finalization of upper terminal Station	The villagers were willing to shift the upper terminal higher than we proposed which makes some kind of dispute and miss understanding. If we shift the upper terminal further higher, the safety of the system will be questionable; hence we call users for meeting to convince about the limitation of system and concluded to finalize the upper terminal in pre-surveyed location and extend the system with combine effort of GRID Nepal and the users in next shift.
Layout work, foundation excavation and construction,	On our first visit to site for layout of work, we found that provided drawings were not matched with provided, hence we had to stop the work until revised design was obtained.
Change in Cable Design	The cable receives from DDC is fixed in diameter, type and strength; hence we had to change the cable design according the cable available.
Innovation in the system	In the primeval version of gravity ropeway, there are different problems from operation and maintenance to safety and system itself is not efficient. We have change the orientation of the system to make more efficient as proposed by Green Tech.

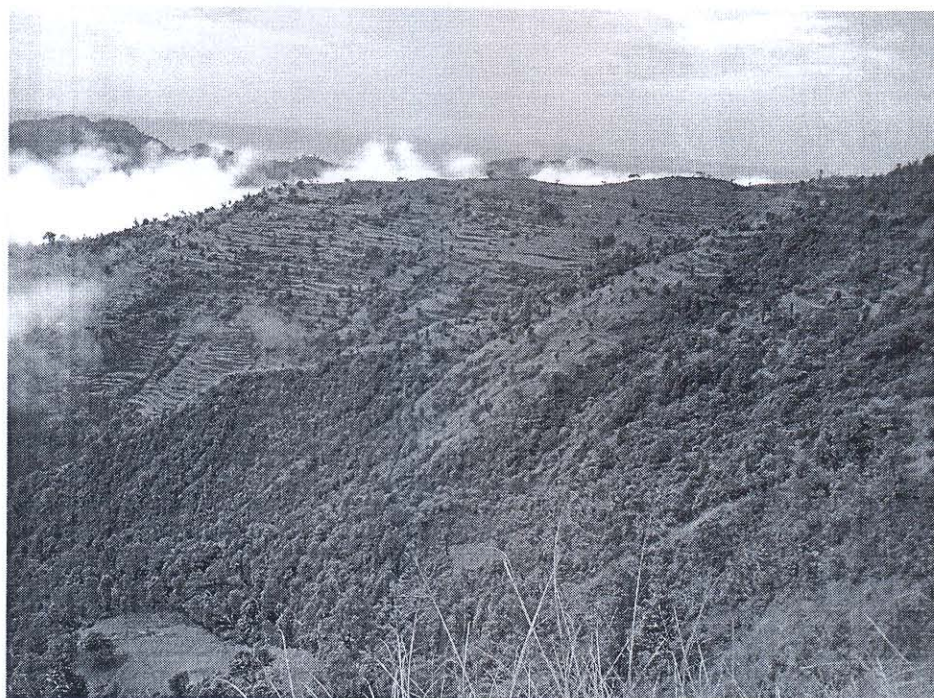
V. Different Works which we have done beyond the scope

Work done beyond the scope	Descriptive information
Surveying foundation location and subsoil investigation.	On our first visit to site for layout of work, we found that provided drawings were not matched with provided, hence we had surveyed the foundation location on the both side of river.
Protection work for foundation block (Gabion box design and construction).	For the protection of anchorage foundation gabion structures have been designed on our own. All required mechanical and civil drawings were not provided for the commission of work.

Some of the Photographs of Work



Upper Terminal Location



Profile of Gravity Ropeway



Mass Meeting for the formation of cooperative